

# *ESEVT: new standards for evaluations*

Ana M Bravo del Moral  
President of EAEEV



School of Agrarian and Veterinary Sciences  
University of Trás-os-Montes e Alto Douro, Vila Real, Portugal,  
27-28 October 2015

# HISTORY OF EVALUATION OF VETERINARY ESTABLISHMENTS IN EUROPE



- **Until 1978** every country/Establishment offered a curriculum based on tradition, state regulations, etc.
- **1978:** Publication of *Directive 78/1027/EEC* and *Decision 78/1028/EEC* establishing the *Advisory Committee on Veterinary Training (ACVT)* that requires harmonization to guarantee a comparable level of veterinary training in the 9 EU members. Define minimum standards.
- **1985-1989:** *Pilot evaluation* in 1 Establishment/ EU member.
- **1990:** adoption of a *permanent system of evaluation* under the umbrella of ACVT.
- **1994:** ACVT passes on the responsibility of evaluation to the *European Association of Establishments for Veterinary Education (EAEVE)*.
- **1996:** ACTV create a Committee ACVT-EAEVE to revise the system.
- **2000:** The *Federation of Veterinarians of Europe (FVE)* joint EAEVE on the responsibility of running the ESEVT.

... 30 YEARS OF APPLICATION OF THE *EUROPEAN SYSTEM OF EVALUATION OF VETERINARY TRAINING (ESEVT)* IN 2015

# EU REGULATED PROFESSIONS



- 78/1026/EEC: recognition of veterinary education
- 78/1027/EEC: minimum requirements of training
- 78/1028/EEC: Advisory Committee on Veterinary Training
- **2005/36/EC: Recognition of Professional Qualifications amended by 2013/55/EU**

- Doctors
- Nurses (general practice)
- Dental practitioners
- **Veterinary Surgeons**
- Midwives
- Pharmacists
- Architects

1985 TO DATE

**ESEVT**  
(EAEVE + FVE)



# PRINCIPLES OF THE ESEVT



- Focuses on **undergraduate veterinary education** to ensure a **comparably high standard throughout the EU** making the mutual recognition of qualifications possible (**EU Directives 36/2005 & 55/2013**).
- The **only Europe-wide profession specific evaluation system**.
- Carried out by the **EAEVE** in co-operation with the **FVE**.
- Final decision taken by an independent body: **ECOVE** (**E**uropean **C**ommittee on **V**eterinary **E**ducation).
- Evaluations should be carried out periodically at **10 year intervals**.
- Based on the **application of Standard Operating Procedures (SOPs)** previously approved and regularly updated.

# ESTRUCTURE OF THE ESEVT (SOP Budapest 2012)



## □ STAGE I EVALUATION OF QUALITY OF TRAINING

- Approval
- Conditional approval
- Non approval

## □ STAGE II ACCREDITATION OF QUALITY ASSURANCE

- Accreditation
- Conditional accreditation
- Non accreditation

# ESTRUCTURE OF THE ESEVT

(SOP proposal Uppsala 2016)



## □ STAGE I + II integrated

EVALUATION OF QUALITY OF TRAINING and QUALITY ASSURANCE

- **Accreditation** in case of no Major Deficiency
- **Conditional Accreditation** in case of 1 single Major Deficiency
- **Non Accreditation** in case of several Major Deficiencies

**Four types of evaluation are organised by the ESEVT**

- ) Full Visitation
- ) Re-visitation
- ) Consultative Visitation
- ) Interim Report

# SELF EVALUATION REPORT



## SOP proposal Uppsala 2016

ESEVT's principal aim in **setting standards**, and evaluating the Establishment against them, is **to ensure** that the Establishment:

- is well managed
- has adequate financing to sustain its educational, research and social commitments
- has appropriate resources of staff, facilities and animals
- provides an up to date professional curriculum
- provides an appropriate learning environment
- operates a fair and reliable assessment system
- operates *ad hoc* QA and quality enhancement mechanisms





# SELF EVALUATION REPORT



## STANDARDS FOR ACCREDITATION

### 1. OBJECTIVES & ORGANISATION

- Strategic Plan & SWOT analysis (list of objectives, plan, timeframe, indicators)
- Reference to Day-1 skills
- Responsible for veterinary curriculum and responsible for Veterinary Teaching Hospital (VTH) must hold a veterinary degree.
- Organisational structure must allow input from staff, students and stakeholders





# SELF EVALUATION REPORT



## STANDARDS FOR ACCREDITATION

### 2. FINANCES

- Transparent business plan
- Expenditure and Revenues: administration, research, services ...
- Enough budget to meet the objectives and guarantee the teaching, equipment and facilities update

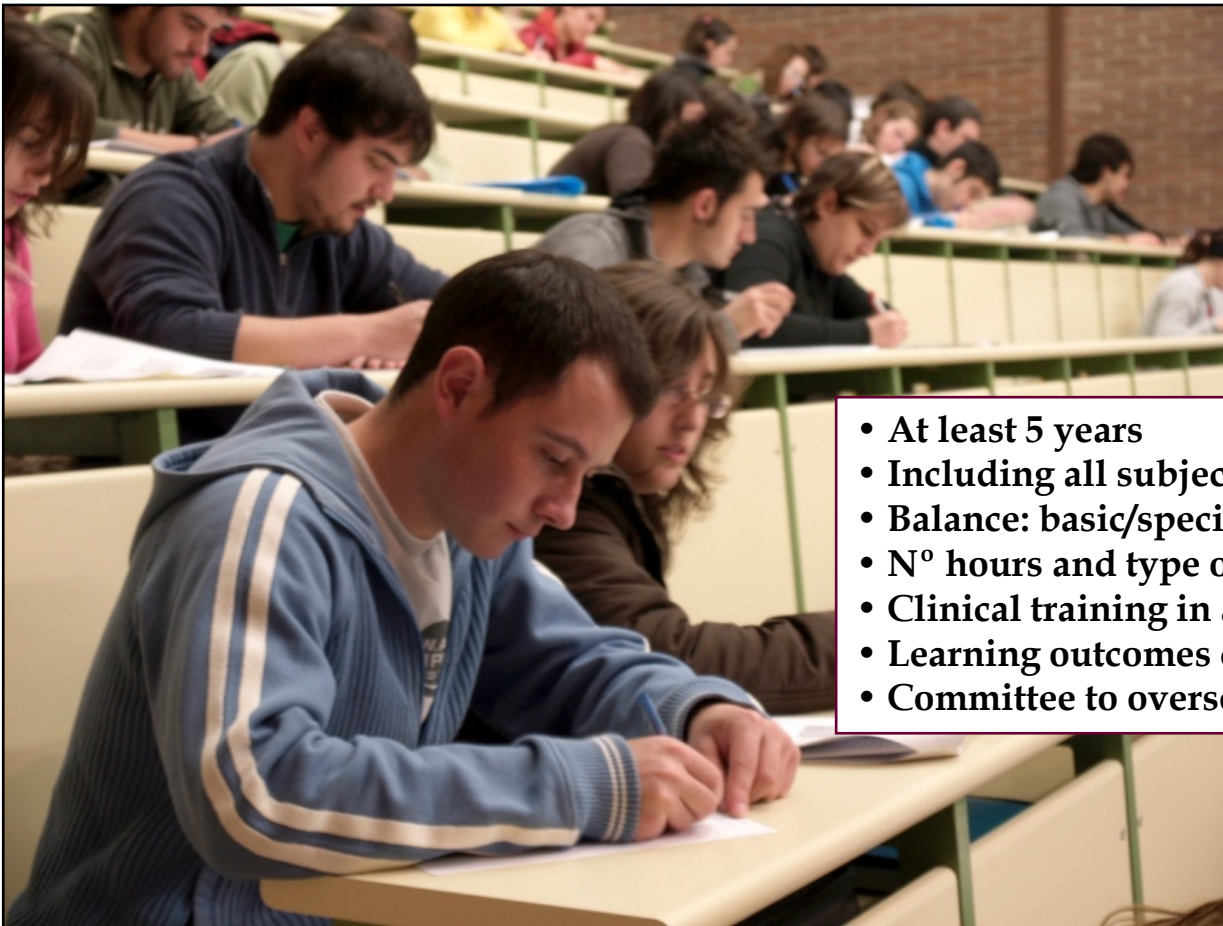


# SELF EVALUATION REPORT



## STANDARDS FOR ACCREDITATION

### 3. CURRICULUM



- At least 5 years
- Including all subjects listed in Directive 36/2005/EU
- Balance: basic/specific subjects, lectures/practicals
- N° hours and type of practicals (intramural, extramural)
- Clinical training in all domestic species
- Learning outcomes communication to staff & students
- Committee to oversee (QA) and manage the curriculum

# SELF EVALUATION REPORT



## STANDARDS FOR ACCREDITATION

### 3. CURRICULUM

3.6. **Extra Mural Studies (EMS)** are training activities organised outside the Establishment, the student being under the direct supervision of a non academic person (e.g. a practitioner). **EMS** cannot replace the core intramural training nor the extramural training under the direct supervision of an academic staff.

3.7. Since the veterinary degree is a professional qualification with Day One Competences, **EMS** must contribute to complement and strengthen the academic education by enhancing for the student the handling of all common domestic animals, the understanding of the economics and management of animal units and veterinary practices, the communication skills for all aspects of veterinary work, the hands-on practical and clinical training, the real-life experience, and the employability of the future graduate student.

3.8. The **EMS** providers must have an official agreement with the Establishment and the student (in order to fix the respective rights and duties, including insurance matters), provide a standardised evaluation of the performance of the student during the **EMS** and be allowed to provide feedback to the Establishment on the **EMS** programme.

3.9. There must be a member of the academic staff responsible for the overall supervision of the **EMS**, including liaison with **EMS** providers.

3.10. Students must take responsibility for their own learning during **EMS**. This includes preparing properly before each placement, keeping a proper record of their experience during **EMS** by using the logbook provided by the Establishment and evaluating the **EMS**. Students must be allowed to complain officially or anonymously about abnormal behaviours during **EMS**.



# SELF EVALUATION REPORT



## STANDARDS FOR ACCREDITATION

### 4. FACILITIES & EQUIPMENT

- Buildings, facilities and equipment well maintained and updated.
- Running Hospital 24/7 whole year round: pharmacy, diagnostic imaging, anaesthesia, internal medicine, intensive/critical care, surgeries, ambulatory services, isolation units and necropsy facilities.
- Mobile clinic.
- Access to the main food producing animals (teaching farm or agreement with external farm/s)
- High standard in biosecurity, breeding and animal welfare of faculty and external facilities (slaughterhouses, farms, industries..) [Biosecurity Manual Final 6Jan10.pdf](#)

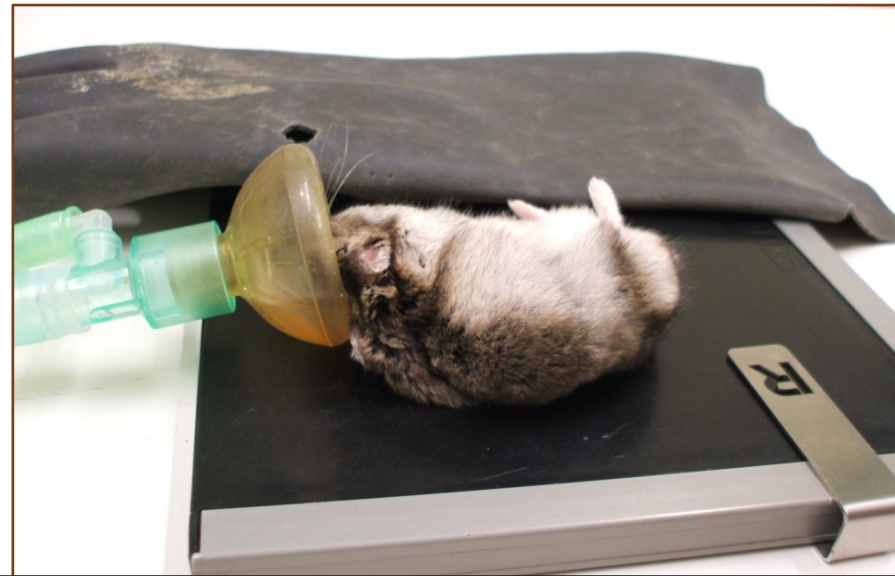


# SELF EVALUATION REPORT



## STANDARDS FOR ACCREDITATION

### 5. ANIMAL RESOURCES & TEACHING MATERIAL OF ANIMAL ORIGIN



- Adequate number and variety of animals (healthy, diseased, cadavers, materials) to meet the objectives
- Guarantee clinical hands-on training of students in all domestic species
  - **Indicators:** animals/students, hospitalizations/students, consultations/students, necropsies/students, etc.
- Supportive medical record system (teaching, research, services)



# SELF EVALUATION REPORT



## STANDARDS FOR ACCREDITATION

### 6. INFORMATION RESOURCES

- State-of-the-art information resources (teaching, research, services, continuing education)
- Library with qualified librarian and IT unit
- Timely resources of information (print, Emedia, Elearning platform) easily available for staff and students (Wi-Fi)





# SELF EVALUATION REPORT



## STANDARDS FOR ACCREDITATION

### 7. STUDENT ADMISSION, PROGRESSION & WELFARE



- Number of students consistent with resources (buildings, facilities, equipment, staff, clinical caseload....)
- Objectives, curriculum, admission requirements, criteria and procedures public and clear.
- Admission procedure consistent, fair and free of discrimination.
- Monitoring of progression and drop-out of students.
- Support to students needs (physical, emotional, welfare)
- Possibility of student feed-back

# SELF EVALUATION REPORT



## STANDARDS FOR ACCREDITATION

### 8. STUDENT ASSESSMENT

- **Assessment tasks and grading criteria: clear, public and timely available to students**
- **Explicit mechanism to pass based on learning outcomes**
- **Explicit mechanism to appeal**
- **Valid and reliable methods of formative and summative assessment**
- **Significant value of direct assessment and control of clinical skills and Day One Competences**





# SELF EVALUATION REPORT



## STANDARDS FOR ACCREDITATION

### 9. ACADEMIC & SUPPORT STAFF

- Appropriate number of qualified and prepared staff to deliver the educational programme  
**Indicators:** Full Time Equivalents of teaching staff/ students, Academic/Support Staff
- Training and qualification (good teaching and evaluation practices, learning & e-learning resources, biosecurity & QA procedures)
- Most teachers must be veterinarians
- Academic positions must offer stability, continuity, and competence of the academic staff
- Balanced workload of teaching, research and services
- Well-defined, comprehensive and publicised programme for the professional growth and development of academic and support staff
- Promotion criteria for academic and support staff must be clear and explicit



# SELF EVALUATION REPORT



## STANDARDS FOR ACCREDITATION

### 10. RESEARCH PROGRAMMES, CONTINUING AND POSTGRADUATE EDUCATION

- Significant and broad research activities of staff (research-based teaching)
- All students must be trained in scientific method and research techniques relevant to evidence-based veterinary medicine
- All students must have opportunities to participate in research programmes
- Establishment must provide advanced postgraduate degree programmes (PhD, internships, residencies and continuing education programmes)



# SELF EVALUATION REPORT



## STANDARDS FOR ACCREDITATION

### 11. OUTCOME ASSESSMENT AND QUALITY ASSURANCE

#### THE ESTABLISHMENT MUST:

- Have a policy for quality assurance, public and part of their strategic management.
- Deliver programmes to encourage students' active role in the learning process.
- Apply pre-defined and published regulations covering student "life cycle" (admission, progression, recognition and certification).
- Assure of the competence of their teachers and apply fair and transparent processes for the recruitment and development of the staff.
- Collect, analyse and use relevant information for the effective management of their programmes.
- Publish information about their activities, including programmes, which is clear, accurate, objective, up-to date and readily accessible
- Monitor and periodically review their programmes to ensure that they achieve the objectives (continuous improvement).
- Undergo external quality assurance in line with the ESG on a cyclical basis.



# NEW INDICATORS



- 22 Indicators (2 new)

[Indicators approved by ExCom 28.01.2015.pdf](#)

- Automatic calculations in the SER

[ESEVT Indicators draft 2 Excel table for automatic calculation 12 04 2015.xlsx](#)





# MEMBERS OF EAEVE

(May 2015)



**Group 1. Ireland 1, The Netherlands 1, UK 7**

**Group 2. Portugal 6, Spain 11**

**Group 3. *Albania 1, Greece 2, Israel 1, Italy 13, Romania 4***

**Group 4. Belgium 2, France 4**

**Group 5. Austria 1, Germany 5, *Switzerland 1***

**Group 6. Denmark 1, Estonia 1, Finland 1, Latvia 1, Lithuania 1, *Norway 1, Sweden 1***

**Group 7. Croacia 1, Czech Republic 2, Hungary 1, Poland 4, Slovak Republic 1, Slovenia 1**

**Group 8: *Bosnia-Herzegovina 1, Bulgaria 2, FYROM 1, Turkey 13, Serbia 1, Jordan 1***

*Italics: non EU members*

**ESTABLISHMENTS**

**96 in 34 countries**

**75 in EU**



# ESTABLISHMENTS' STATUS

(May 2015)



[EAEVE Establishments Status January2015.pdf](#)

- **MEMBERS: 96**
  - **Non evaluated (yet) by the ESEVT: 14 (14.6%)**
  - **Evaluated by the ESEVT: 82 (85.4%)**
    - **Stage 1**
      - **Approved: 59 (61.4%)**
      - **Conditionally approved: 5 (5.2%)**
      - **Non approved: 18 (18.75%)**
    - **Stage 2:**
      - **Accredited: 10 (10.4%)**
      - **Non accredited: 1 (1%)**



# APPROVED ESTABLISHMENTS IN EU

(MAY 2015)



<b>Austria</b>	<b>1 / 1</b>	<b>Belgium</b>	<b>2 / 2</b>
<b>Bulgaria</b>	<b>2 / 0</b>	<b>Croatia</b>	<b>1 / 1</b>
<b>Denmark</b>	<b>1 / 1</b>	<b>Czech Republic</b>	<b>2 / 2</b>
<b>Finland</b>	<b>1 / 1</b>	<b>Estonia</b>	<b>1 / 1</b>
<b>Germany</b>	<b>5 / 5</b>	<b>France</b>	<b>4 / 3 (1)</b>
<b>Hungary</b>	<b>1 / 1</b>	<b>Greece</b>	<b>2 / 1</b>
<b>Italy</b>	<b>13 / 12 (1)</b>	<b>Ireland</b>	<b>1 / 1</b>
<b>Lithuania</b>	<b>1 / 0</b>	<b>Latvia</b>	<b>1 / 0</b>
<b>Portugal</b>	<b>6 / 1</b>	<b>Poland</b>	<b>4 / (2)</b>
<b>Slovak Republic</b>	<b>1 / 1</b>	<b>Romania</b>	<b>4 / 1 (1)</b>
<b>Sweden</b>	<b>1 / 1</b>	<b>Slovenia</b>	<b>1 / 1</b>
<b>The Netherlands</b>	<b>1 / 1</b>	<b>Spain</b>	<b>11 / 8</b>
		<b>UK</b>	<b>7 / 7</b>

Establishments: Total / Approved + (Conditionally Approved)

75 / 54 + (5) = 79%

# EXAMPLES OF MAJOR DEFICIENCIES



EUROPEAN ASSOCIATION OF ESTABLISHMENTS  
FOR VETERINARY EDUCATION



STRATEGIC PLAN  
2015-2020

- Lack of Strategic Plan



# EXAMPLES OF MAJOR DEFICIENCIES



- **Facilities:** lack or not appropriate (hospital, necropsy room, isolation units..)



# EXAMPLES OF MAJOR DEFICIENCIES



- Biosafety not appropriate





# EXAMPLES OF MAJOR DEFICIENCIES



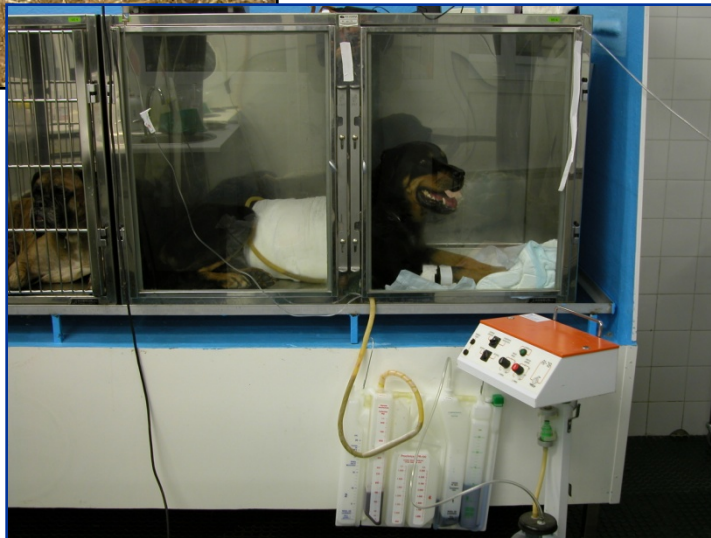
- Lack of **mobile clinic** for food producing animals



# EXAMPLES OF MAJOR DEFICIENCIES



- Non running **emergency service** 24h/7 all year round

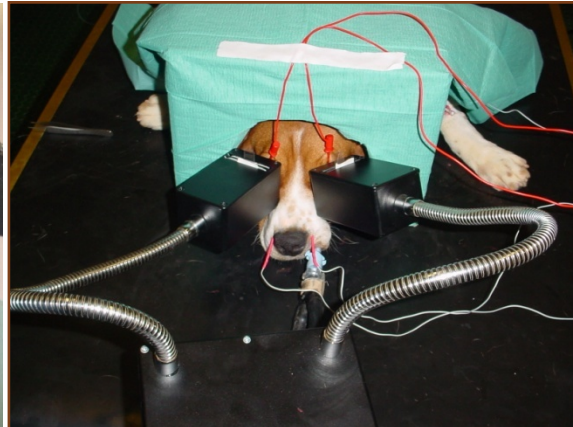




# EXAMPLES OF MAJOR DEFICIENCIES



- Caseload in clinics: low or lack of species





# EXAMPLES OF MAJOR DEFICIENCIES



- Non appropriate “hands on” training of students (groups too large)





# EXAMPLES OF MAJOR DEFICIENCIES



- Insufficient teaching in **Food Hygiene, Animal Production,** visits to slaughterhouses



# EXAMPLES OF MAJOR DEFICIENCIES



- Problems with **animal welfare**

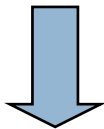




# Future of the Evaluation System



- **AVMA & COE** (*American Veterinary Medical Association and its Committee on Education*)
- **AVBC** (*Australasian Veterinary Boards Council*)
- **SAVC** (*South African Veterinary Council*)
- **RCVS** (*Royal College of Veterinary Surgeons*)
- **ESEVT** (*EAEVE/FVE*)



Development of a **GLOBAL ACCREDITATION SYSTEM**

A photograph of the Roman Wall of Lugo at night. The central focus is a large, semi-circular stone archway, illuminated from below by warm, golden lights that create a strong glow and cast long shadows. To the right, a section of the wall is visible, constructed from large, dark stone blocks. In the background, other parts of the wall and arches are visible, also illuminated by similar lights, though they are less prominent. The overall scene is dark, with the primary light source being the spotlights directed at the archway.

Gracias por la atención

Muralla Romana de Lugo, S. I d C, Patrimonio de la Humanidad